

# SAIGON NEWPORT CORP. (SNP)

## Sea Ports in Vietnam



April 2012

# GENERAL INFORMATION

## **Milestone:**

SOE, business defense unit founded March, 15 1989  
Transformed into a 'holding company' in December, 2006  
Promoted to be a 'corporation' in February, 2010

## **Governing body:**

The Vietnam People's Navy, Ministry of Defense

## **Location:**

Ho Chi Minh City

## **Headquarter:**

**SAIGON NEWPORT CORPORATION**

722, Dien Bien Phu St., W. 22, Binh Thanh Dist.,  
Ho Chi Minh City, Vietnam

Tel.: (848) 35123977 – 35122099

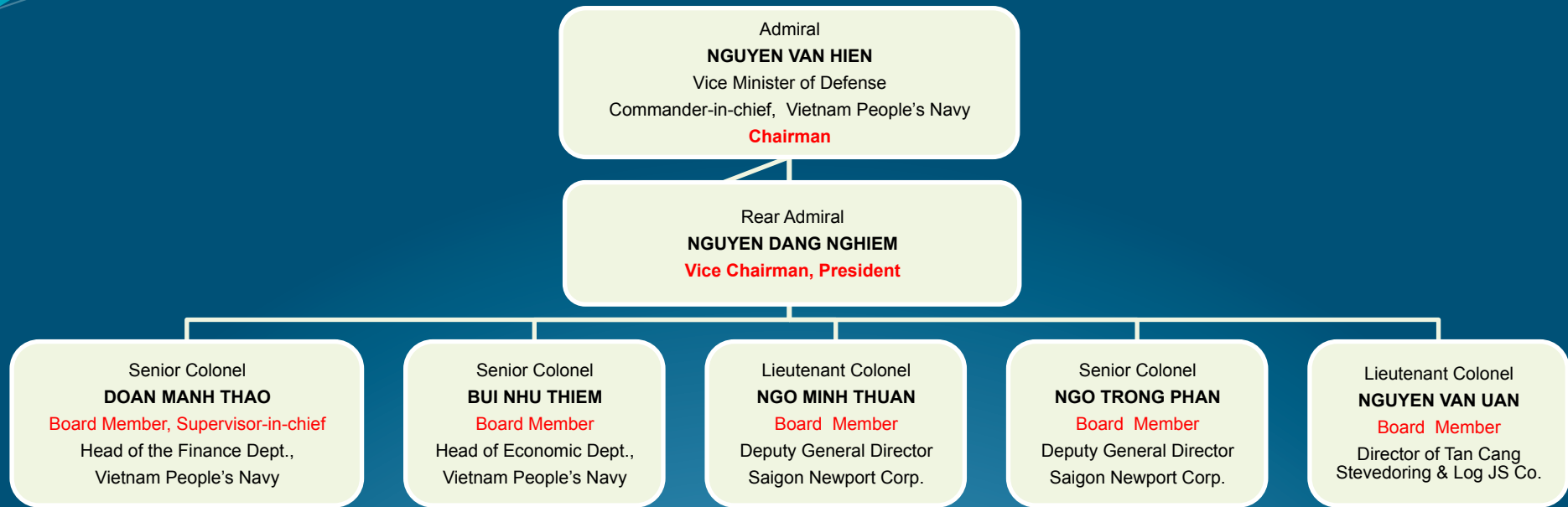
Fax: (848) 35120591

Email: [marketing.snp@saigonnewport.com.vn](mailto:marketing.snp@saigonnewport.com.vn)

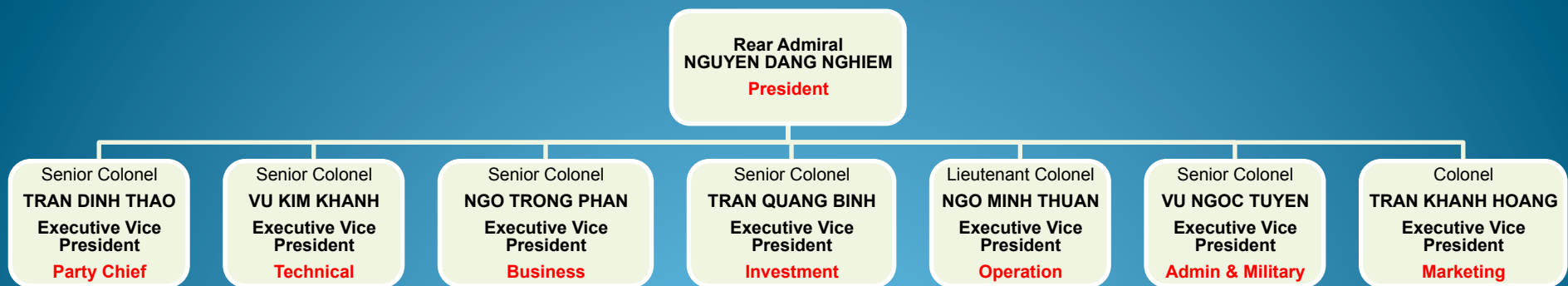
Website: [www.saigonnewport.com.vn](http://www.saigonnewport.com.vn)



# MEMBERS' COUNCIL



# BOARD OF DIRECTORS



# ORGANIZATION CHART

MEMBERS' COUNCIL

BOARD OF SUPERVISORS

BOARD OF DIRECTORS

FUNCTIONAL DIVISIONS

ENTERPRISES

SUBSIDIARIES

1. Operation Center

2. Political Dept

3. Business Planning Dept

4. Finance & Accounting Dept

5. Human Resources Dept

6. Marketing Dept

7. Habor Dept

8. Technical & Material Procurement Dept

9. Administration Dept

10. Security & Military Dept

11. Construction Project Dept

12. Information Technology Dept

13. Clerical Dept

14. Safety & Legal Dept

1 Tan Cang Cont Handling & Trucking Enterprise

2. Tan Cang – Long Binh Investment & Service Development Enterprise

16. TC-STC HR Development Co. Ltd

17. TC-CM DIC JS. Co.

18. Tan Cang – Hiep Phuoc JS. Co.

19. Tan Cang Construction No. 1 JS Co.

20. Tan Cang IT Solutions JS. Co.

21. Tan Cang-189 Hai Phong JS Co.

22. TC-CM Towage Service JS Co.

23. Tan Cang First Agency & Services JS Co.

24. Tan Cang Offshore Services JS Co.

25. Tan Cang Maritime Services JS Co.

1. Tan Cang Construction Co. Ltd

2. Tan Cang – Song Than ICD Co. Ltd

3. Tan Cang Pilot Co. Ltd

4. Tan Cang Logistics & Stevedoring JS Co.

5. Tan Cang – Long Binh ICD JS Co.

6. Tan Cang Technical Services JS Co.

7. Tan Cang Real Estate JS Co.

8. Tan Cang – Cai Mep Container Terminal JS Co.

9. Tan Cang – Cai Mep Int'l Terminal Co. Ltd

10. Tan Cang – Central Vietnam JS Co.

11. Tan Cang – 128 Hai Phong ICD JS Co.

12. Tan Cang Warehousing & Transportation JS Co.

13. Cat Lai Port JS Co.

14. Tan Cang – Cypress JS Co.

15. Tan Cang No 2 JS Co.

New



# BUSINESS SCOPE



Terminal services



Warehousing services



ICD services



Pilot service



Trucking service



Tugboat service



Barging service





# BUSINESS SCOPE



IT service



Technical service



Training service



Depot service



Bulk cargo service



Salvage service



Construction service



Real estate service

# LOGISTICS NETWORK

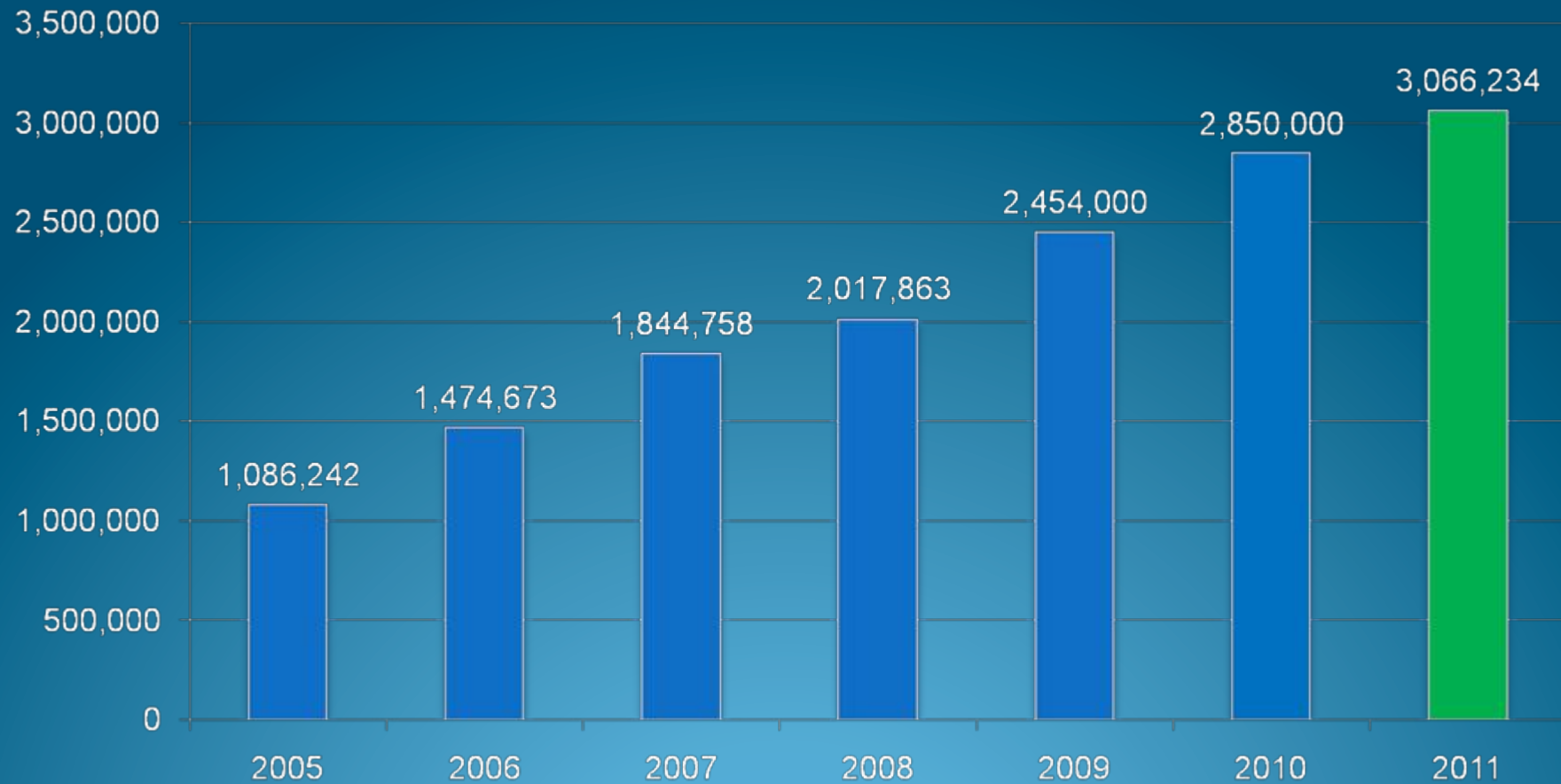
	TYPE OF FACILITY	QUANTITY	NAME OF FACILITY	LOCATION
1.	<b>Barge terminals</b> 	07	Tan Cang Terminal Tan Cang – Cat Lai Terminal Tan Cang – Nhon Trach Depot Tan Cang – Cai Mep Terminals Tan Cang – Cao Lanh Terminal Tan Cang – Sa Dec Terminal Tan Cang – My Thoi Terminal	HCMC HCMC Dong Nai Province Ba Ria – Vung Tau Province Dong Thap Province Dong Thap Province An Giang Province
2.	<b>Feeder terminals</b> 	03	Tan Cang – Cat Lai Terminal Tan Cang – Mien Trung Terminal Tan Cang – 189 Hai Phong Terminal	HCMC Binh Dinh Province Hai Phong City
3.	<b>Deepwater terminals</b> 	01	Tan Cang – Cai Mep Terminals (TCCT & TCIT)	Ba Ria – Vung Tau Province
4.	<b>ICDs</b> 	03	Tan Cang – Song Than ICD Tan Cang – Long Binh ICD Tan Cang – 128 Hai Phong ICD	Binh Duong Province Dong Nai Province Hai Phong City



# VOLUME 2005 – 2011 (TEUs)

## Container growth rate:

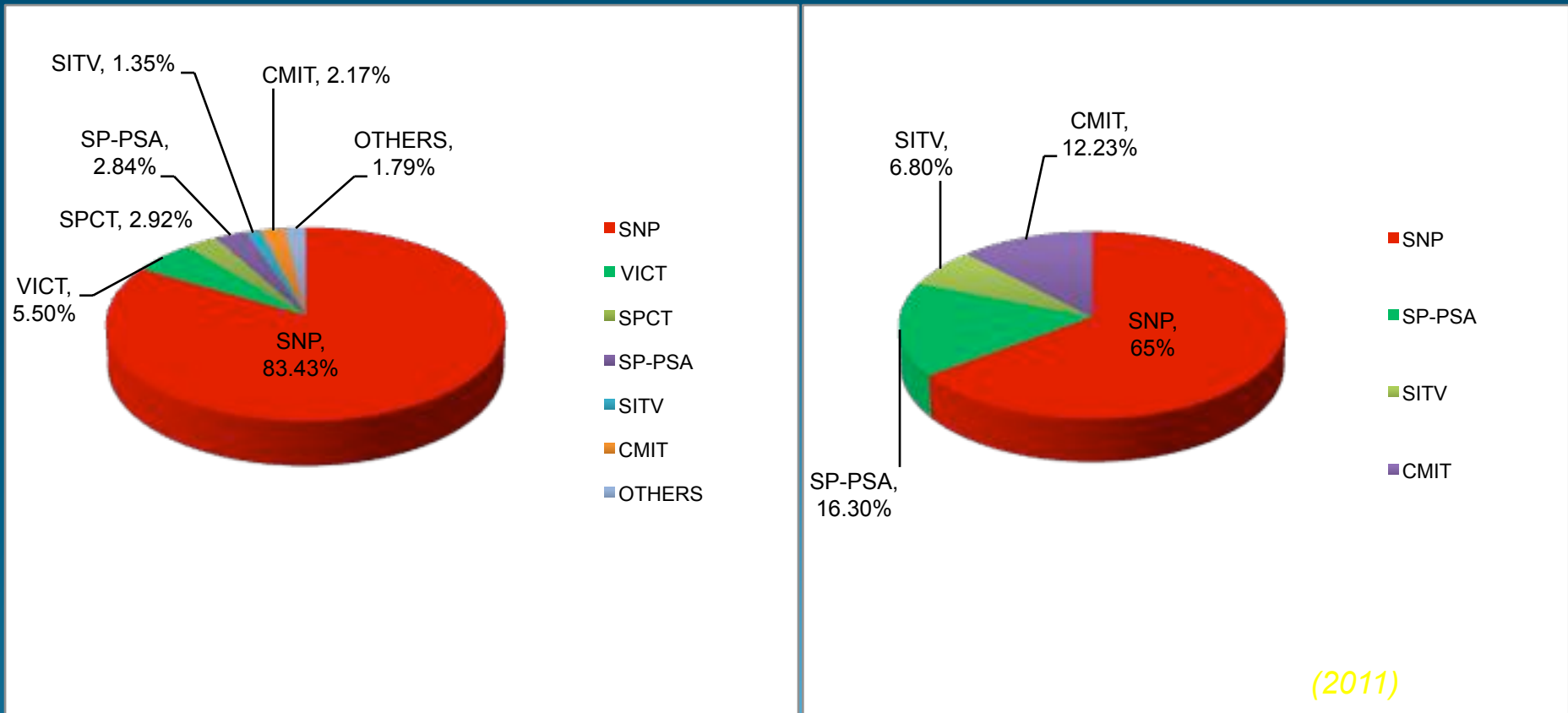
+36,76% (2006), +25% (2007), +9.38% (2008), +21.61% (2009),  
+16.13% (2010), +7.59% (2011)





# MARKET SHARE (2011)

➤ Total import-export volume in the South Focal Economic area:  
3,548,919 teus (2010), 3,937,472 teus (2011)



(2011)

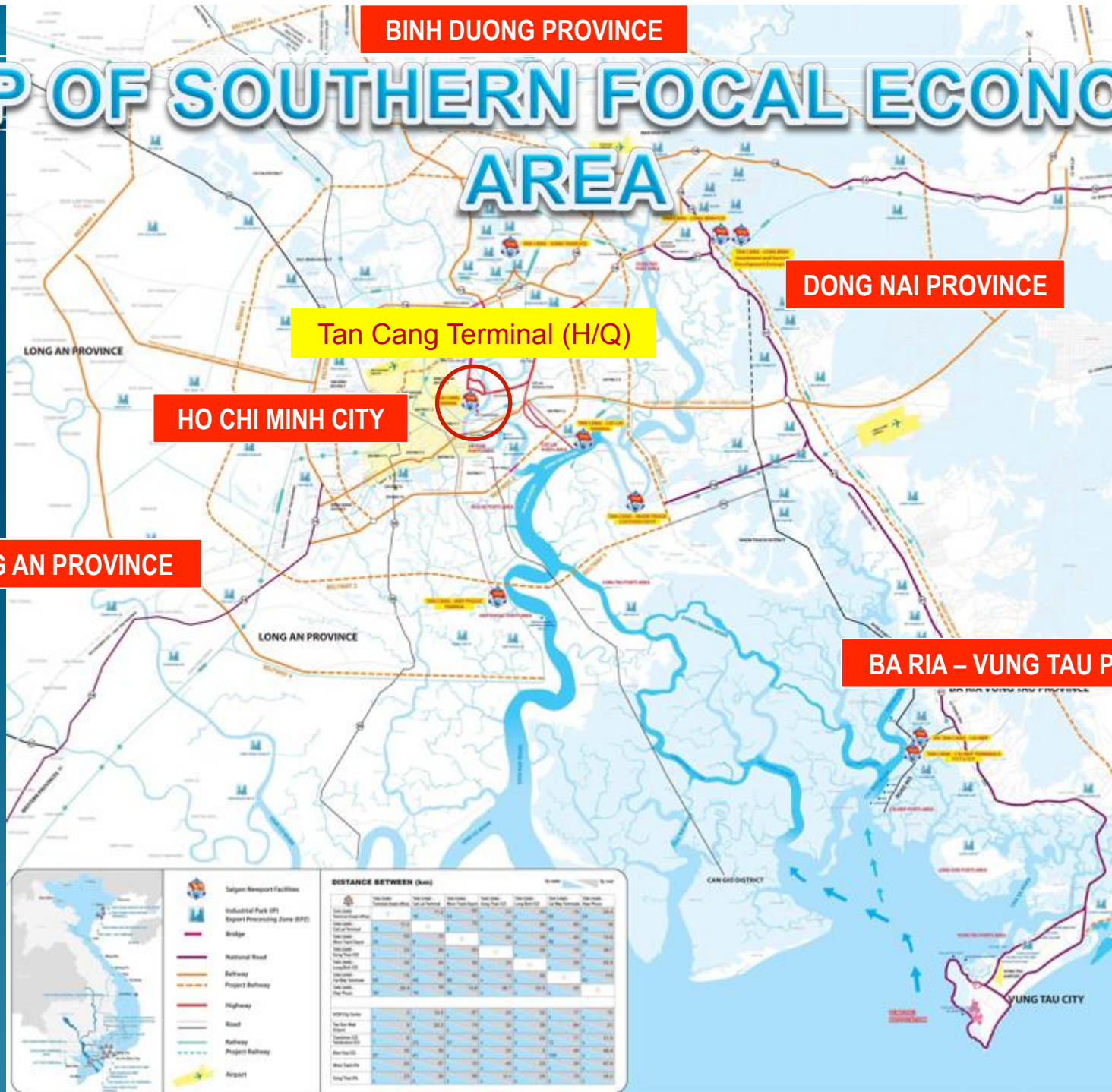
# SNP's logistics

	NAME OF FACILITY	LOCATION
Barge terminals	Tan Cang Terminal	HCMC
	Tan Cang – Cat Lai Terminal	HCMC
	Tan Cang – Nhon Trach Depot	Dong Nai Province
	Tan Cang – Cai Mep Terminals	BR-VT rovince
	Tan Cang – Cao Lanh Terminal	Dong Thap Province
	Tan Cang – Sa Dec Terminal	Dong Thap Province
	Tan Cang – My Thoi Terminal	An Giang Province
Feeder terminals	Tan Cang – Cat Lai Terminal	HCMC
	Tan Cang – Mien Trung Terminal	Binh Dinh Province
	Tan Cang – 189 Hai Phong Terminal	Hai Phong City
Deepwater terminals	Tan Cang – Cai Mep Terminals (TCCT & TCIT)	BR-VT Province
ICDs	Tan Cang – Song Than ICD Tan Cang – Long Binh ICD Tan Cang – 128 Hai Phong ICD	Binh Duong Province Dong Nai Province Hai Phong City





# MAP OF SOUTHERN FOCAL ECONOMIC AREA



# TAN CANG TERMINAL

## Location

Ho Chi Minh City

## Scale & capacity

- ✓ Total area: 40ha; WHS area: 30,000sqm; no. of WHS: 7; CY area: 275,000sqm.
- ✓ Berth length: 704m (5 berths)

## Functions:

- ✓ Logistics center
- ✓ Distribution center
- ✓ Domestic port (stuffing/unstuffing services; customs clearance)
- ✓ Empty container depot (M&R services)

## Major handling equipment

- ✓ Fixed Quayside Crane (Liebherr): 04
- ✓ RMG Crane: 03

## Tan Cang Maritime Commercial Center:

- ✓ International exhibition center
- ✓ Conference & trade center
- ✓ High-class office building







# MAP OF SOUTHERN FOCAL ECONOMIC AREA

**BINH DUONG PROVINCE**

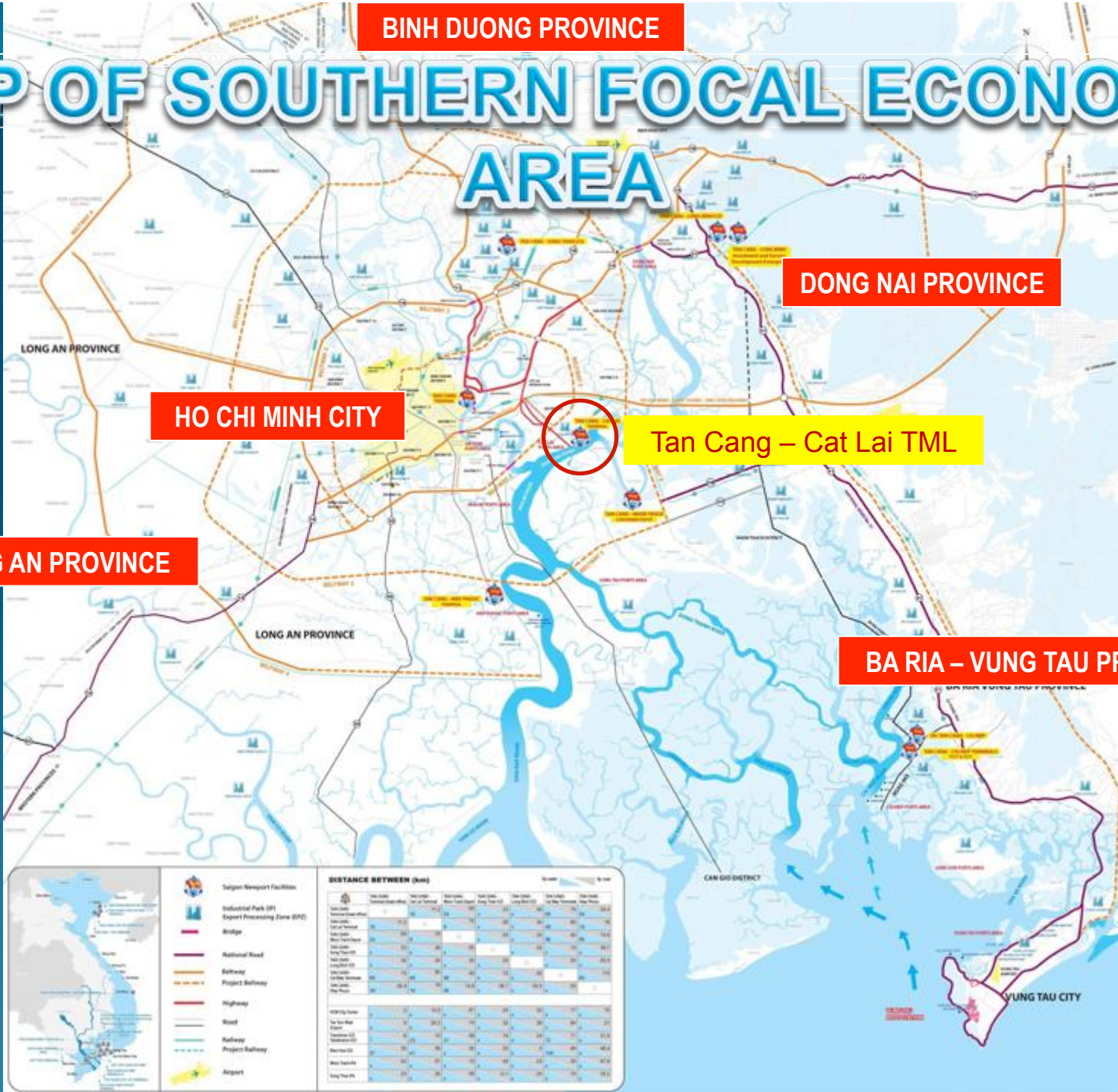
**DONG NAI PROVINCE**

**HO CHI MINH CITY**

**Tan Cang – Cat Lai TML**

**LONG AN PROVINCE**

**BA RIA – VUNG TAU PROVINCE**





# TAN CANG – CAT LAI TERMINAL



1. Nhà xe Cảng Lá Phụng Hiền
2. Văn phòng TTND-S Hàng Tàu
3. Văn phòng Hải Quan
4. Văn phòng Tổng Cty HQ Tân Cảng
5. Văn phòng Terminal Cát Mĩ A
6. CLB Thủy Thủ
7. Văn phòng Terminal Cát Mĩ B
8. Văn phòng Cty CP Khu Văn Tân Cảng
9. Văn phòng Khu Lược
10. Nhà xe Cảng Nguyễn Thị Bình



# TAN CANG – CAT LAI TERMINAL



Tan Cang – Cat Lai Terminal layout



# SNP's logistics

	NAME OF FACILITY	LOCATION
Barge terminals	Tan Cang Terminal Tan Cang – Cat Lai Terminal Tan Cang – Nhon Trach Depot Tan Cang – Cai Mep Terminals Tan Cang – Cao Lanh Terminal Tan Cang – Sa Dec Terminal Tan Cang – My Thoi Terminal	HCMC HCMC Dong Nai Province BR-VT rovince Dong Thap Province Dong Thap Province An Giang Province
Feeder terminals	Tan Cang – Cat Lai Terminal Tan Cang – Mien Trung Terminal Tan Cang – 189 Hai Phong Terminal	HCMC Binh Dinh Province Hai Phong City
Deepwater terminals	Tan Cang – Cai Mep Terminals (TCCT & TCIT)	BR-VT Province
ICDs	Tan Cang – Song Than ICD Tan Cang – Long Binh ICD Tan Cang – 128 Hai Phong ICD	Binh Duong Province Dong Nai Province Hai Phong City



# MAP OF SOUTHERN FOCAL ECONOMIC AREA

**BINH DUONG PROVINCE**

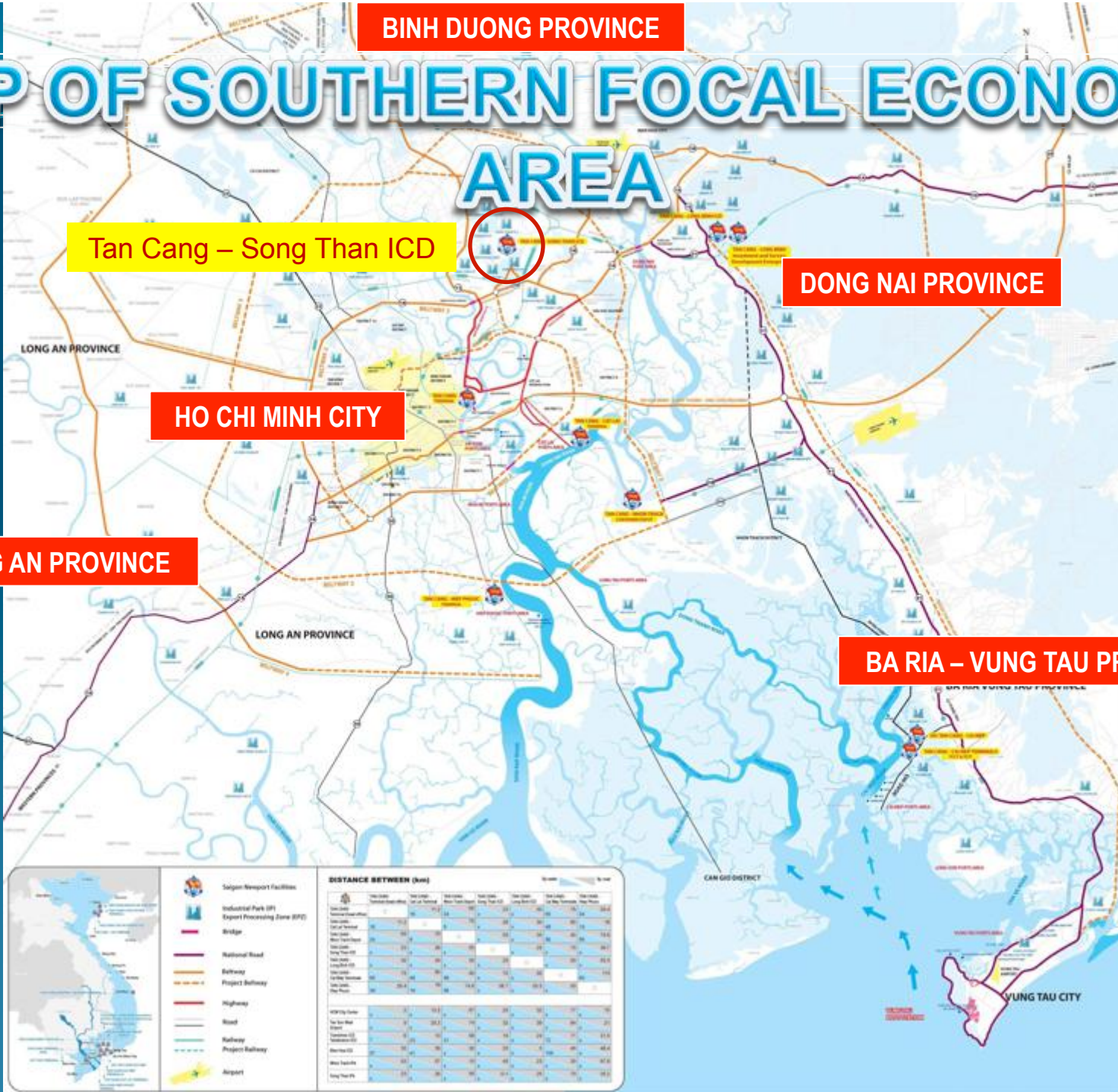
**Tan Cang – Song Than ICD**

**DONG NAI PROVINCE**

**HO CHI MINH CITY**

**LONG AN PROVINCE**

**BA RIA – VUNG TAU PROVINCE**





# TAN CANG – SONG THAN ICD

## Location

Binh Duong Province

## Scale, capacity & productivity

- ✓ Total area: 500,000sqm
- ✓ CY area: 300,000sqm
- ✓ WHS area: 160,000sqm

## Functions:

- ✓ CFS warehouse
- ✓ Domestic warehouse
- ✓ Bonded warehouse
- ✓ Empty container depot
- ✓ Customs clearance point

ICD TÂN CẢNG - SÓNG THẦN



# TAN CANG – SONG THAN ICD



TAN CANG – SONG THAN OVERVIEW



# TAN CANG – SONG THAN ICD



YARD OPERATIONS



TRUCKING TEAM



WAREHOUSE OPERATIONS

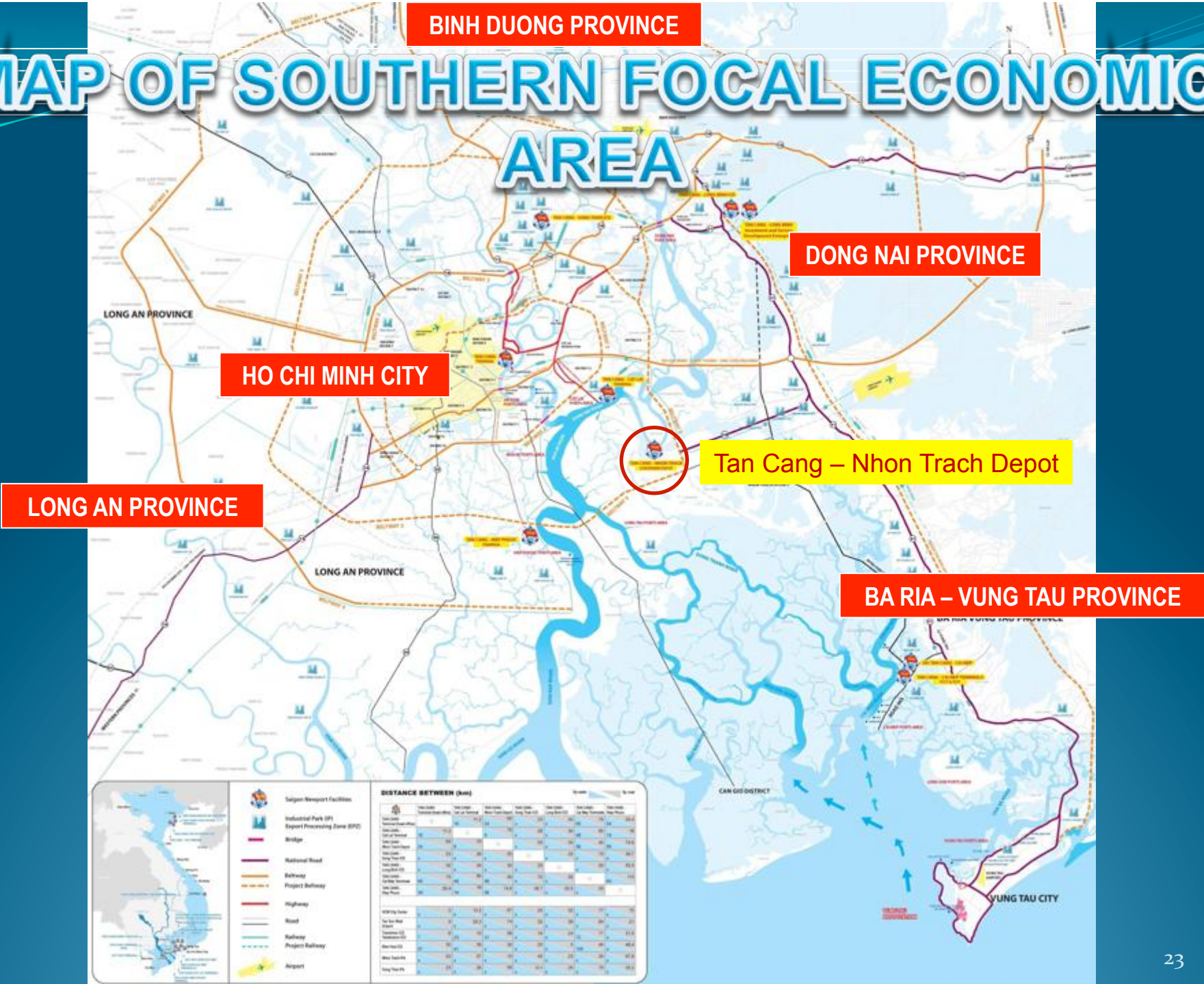
# SNP's logistics

	NAME OF FACILITY	LOCATION
Barge terminals	Tan Cang Terminal	HCMC
	Tan Cang – Cat Lai Terminal	HCMC
	Tan Cang – Nhon Trach Depot	Dong Nai Province
	Tan Cang – Cai Mep Terminals	BR-VT rovince
	Tan Cang – Cao Lanh Terminal	Dong Thap Province
	Tan Cang – Sa Dec Terminal	Dong Thap Province
	Tan Cang – My Thoi Terminal	An Giang Province
Feeder terminals	Tan Cang – Cat Lai Terminal	HCMC
	Tan Cang – Mien Trung Terminal	Binh Dinh Province
	Tan Cang – 189 Hai Phong Terminal	Hai Phong City
Deepwater terminals	Tan Cang – Cai Mep Terminals (TCCT & TCIT)	BR-VT Province
ICDs	Tan Cang – Song Than ICD	Binh Duong Province
	Tan Cang – Long Binh ICD	Dong Nai Province
	Tan Cang – 128 Hai Phong ICD	Hai Phong City





# MAP OF SOUTHERN FOCAL ECONOMIC AREA



**Legend**

- Saligon Newport Facilities
- Industrial Park (IP)
- Export Processing Zone (EPZ)
- Bridge
- National Road
- Bahnway
- Project Bahnway
- Highway
- Road
- Railway
- Project Railway
- Airport

**DISTANCE BETWEEN (km)**

	Ho Chi Minh City	Long An	Long Binh	Long Thoi	Long Thoi	Long Thoi	Long Thoi
Ho Chi Minh City	-	100	100	100	100	100	100
Long An	100	-	100	100	100	100	100
Long Binh	100	100	-	100	100	100	100
Long Thoi	100	100	100	-	100	100	100
Long Thoi	100	100	100	100	-	100	100
Long Thoi	100	100	100	100	100	-	100
Long Thoi	100	100	100	100	100	100	-

# TAN CANG – NHON TRACH DEPOT

## Location

Ho Chi Minh City (8km by waterway to Tan Cang – Cat Lai Terminal)

## Scale & capacity

Total area: 4.2 ha

## Major equipment

Fixed quayside crane (Liebherr): 01

## Function

Empty container depot  
Barge quay  
Bulk/bagged cargo  
stuffing/unstuffing berth







# MAP OF SOUTHERN FOCAL ECONOMIC AREA

**BINH DUONG PROVINCE**

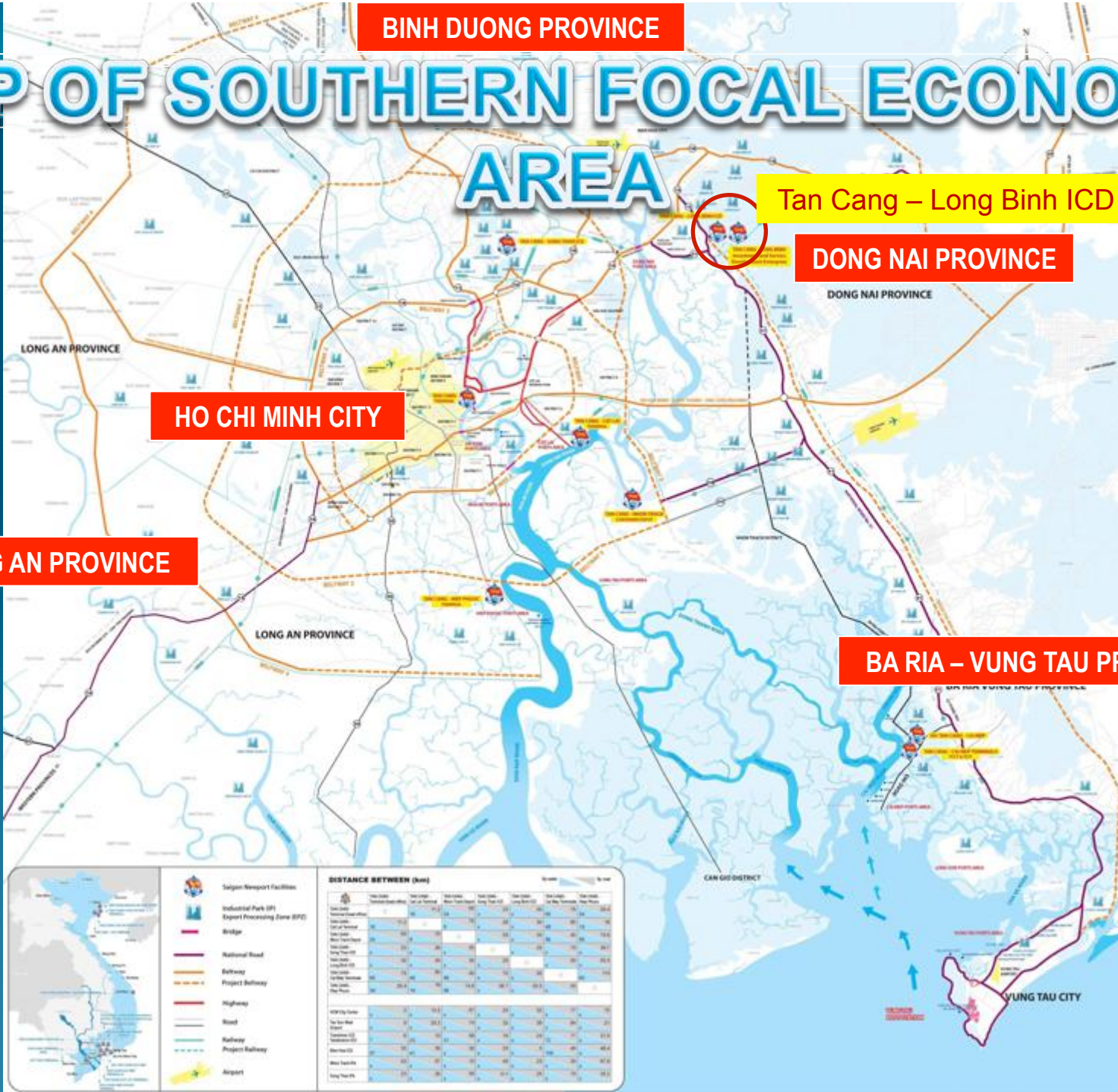
**Tan Cang – Long Binh ICD**

**DONG NAI PROVINCE**

**HO CHI MINH CITY**

**LONG AN PROVINCE**

**BA RIA – VUNG TAU PROVINCE**





# TAN CANG - LONG BINH

Phase II: 220ha

Phase I: 80ha

GIẢI ĐOẠN II

KHU ĐẤT QUY HOẠCH

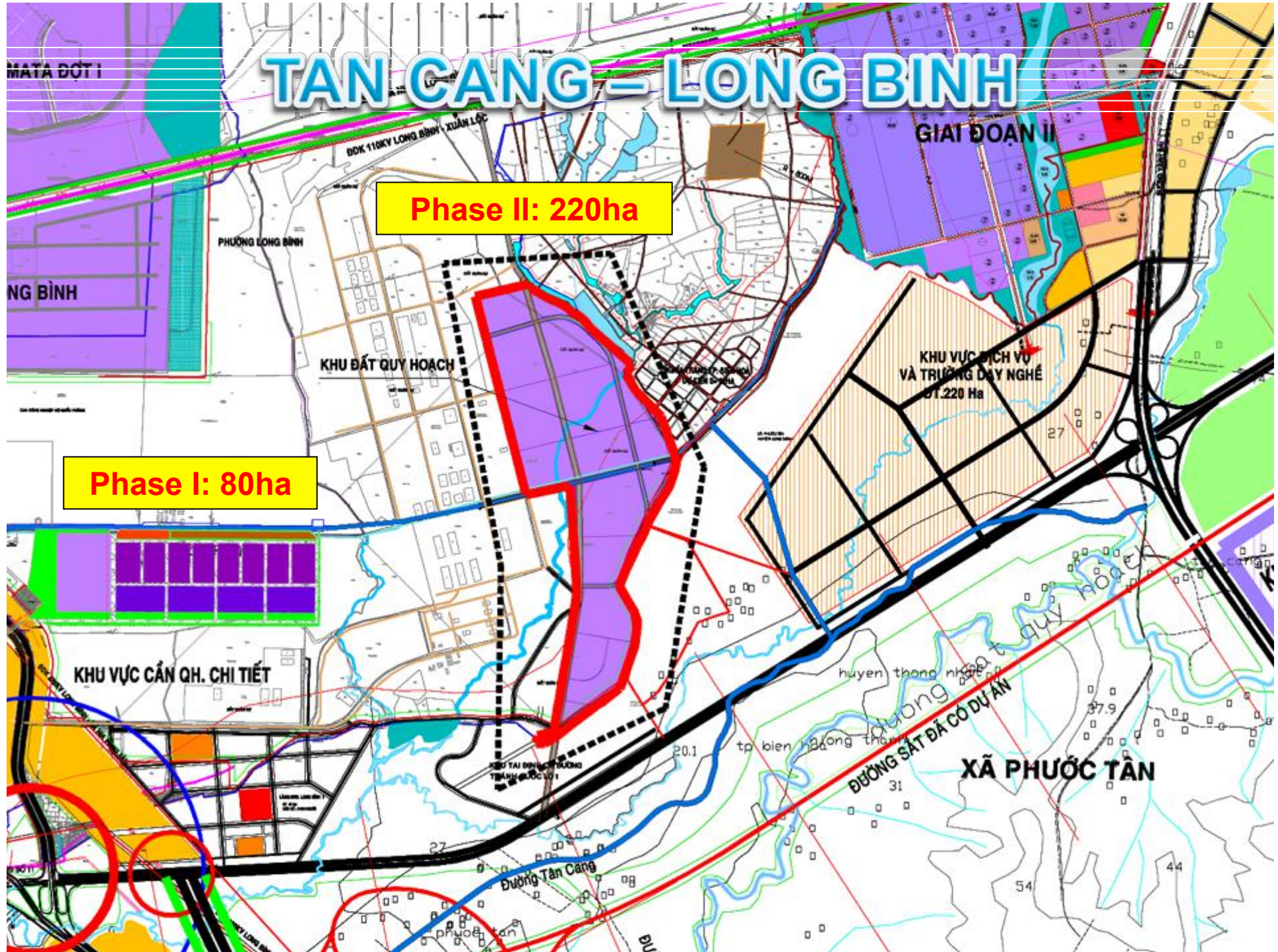
KHU VỰC DỊCH VỤ  
VÀ TRƯỜNG ĐÀO NGHỀ  
31.220 Ha

KHU VỰC CÁN QH. CHI TIẾT

XÃ PHƯỚC TÂN

ĐƯỜNG SẮT ĐÃ CÓ DỰ AN

Đường Tân Cảng





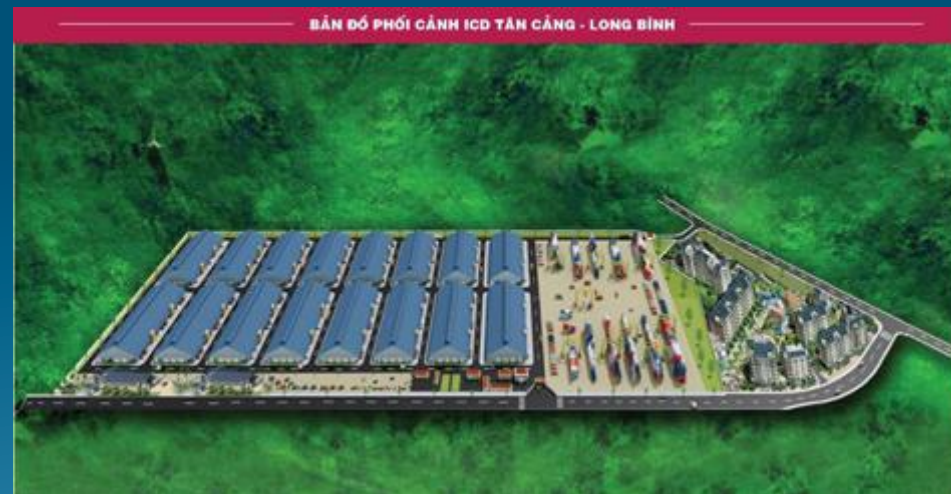
# TAN CANG – LONG BINH ICD

## Functionalities

- ✓ CFS warehouse, bonded warehouse, cool warehouse, cold storage, distribution center
- ✓ ICD & inspection point
- ✓ Empty depot

## Scale & capacity:

- ✓ 15 warehouses (18,000m<sup>2</sup> each)
- ✓ Largest ICD in Vietnam: Phase I = 80ha.
- ✓ Container yard: 200,000m<sup>2</sup>
- ✓ Largest inspection point: 2,600m<sup>2</sup>





# TAN CANG – LONG BINH ICD



WAREHOUSE OPERATIONS



TRUCKING OPERATIONS

# SNP's logistics

	NAME OF FACILITY	LOCATION
Barge terminals	Tan Cang Terminal	HCMC
	Tan Cang – Cat Lai Terminal	HCMC
	Tan Cang – Nhon Trach Depot	Dong Nai Province
	Tan Cang – Cai Mep Terminals	BR-VT rovince
	Tan Cang – Cao Lanh Terminal	Dong Thap Province
	Tan Cang – Sa Dec Terminal	Dong Thap Province
	Tan Cang – My Thoi Terminal	An Giang Province
Feeder terminals	Tan Cang – Cat Lai Terminal	HCMC
	Tan Cang – Mien Trung Terminal	Binh Dinh Province
	Tan Cang – 189 Hai Phong Terminal	Hai Phong City
Deepwater terminals	Tan Cang – Cai Mep Terminals (TCCT & TCIT)	BR-VT Province
ICDs	Tan Cang – Song Than ICD	Binh Duong Province
	Tan Cang – Long Binh ICD	Dong Nai Province
	Tan Cang – 128 Hai Phong ICD	Hai Phong City





# MAP OF SOUTHERN FOCAL ECONOMIC AREA

BINH DUONG PROVINCE

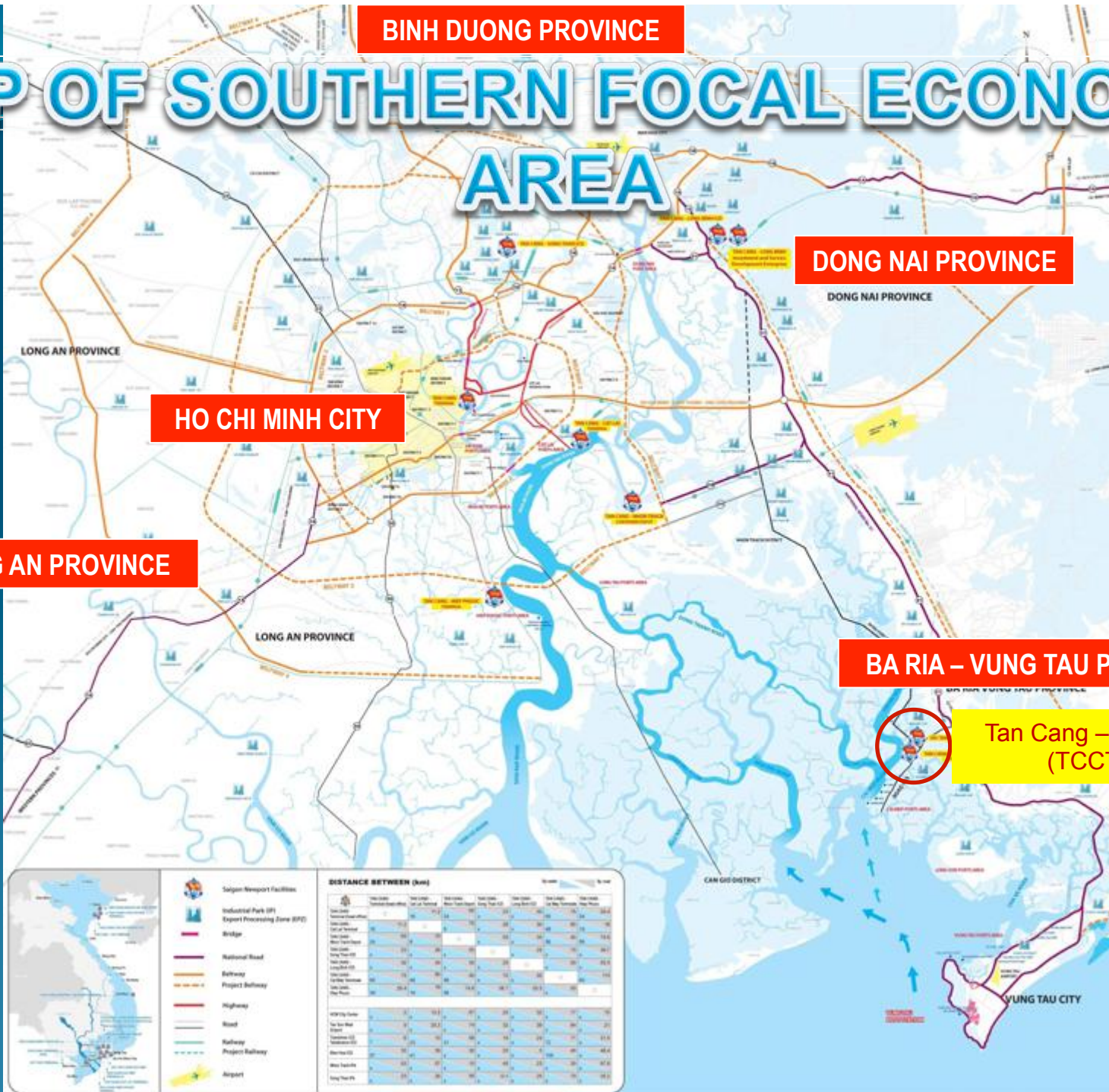
DONG NAI PROVINCE

HO CHI MINH CITY

LONG AN PROVINCE

BA RIA – VUNG TAU PROVINCE

Tan Cang – Cai Mep TMLs (TCCT & TCIT)

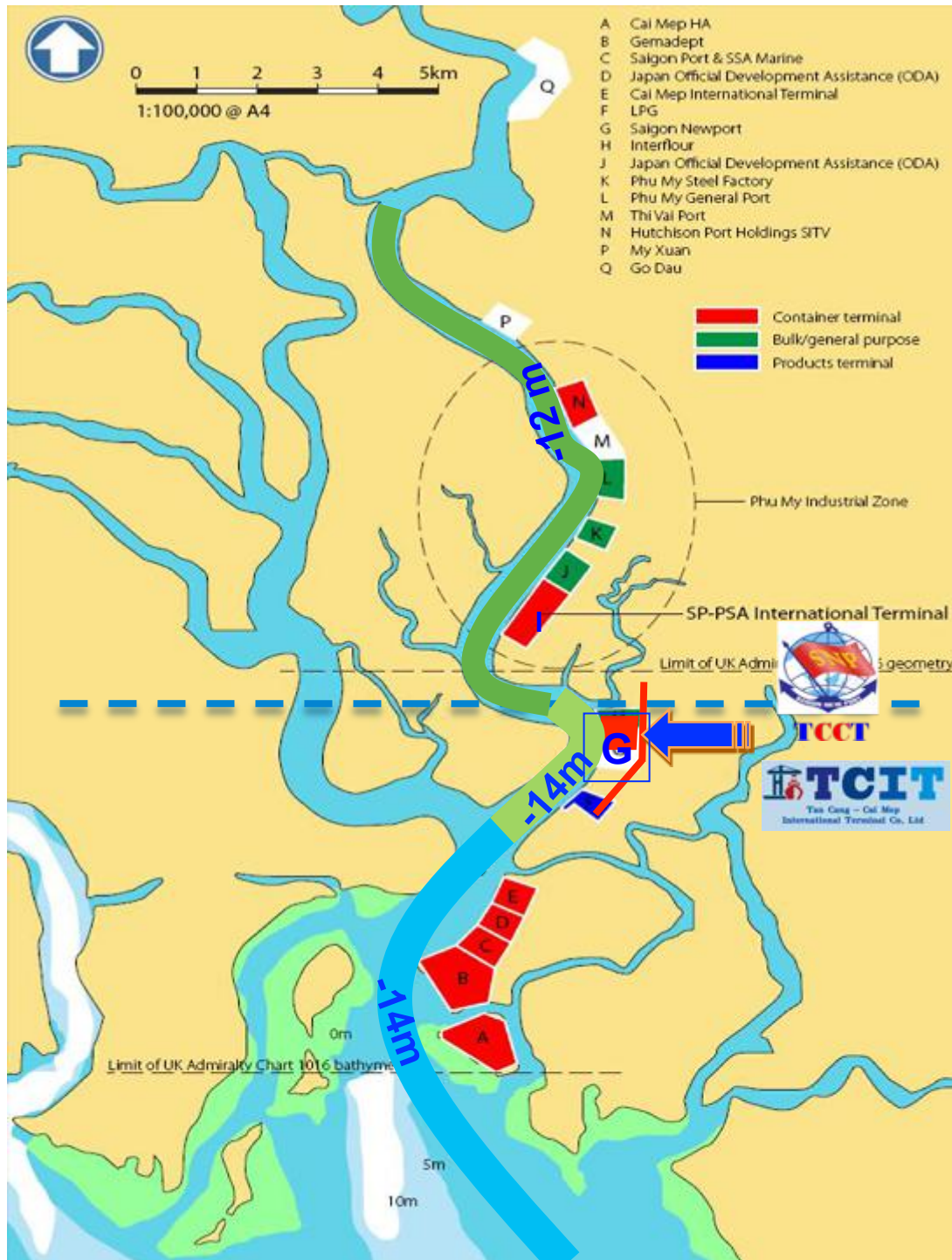




# ARTISTIC VIEW OF DEEPWATER PORT SYSTEM IN THI VAI – CAI MEP AREA



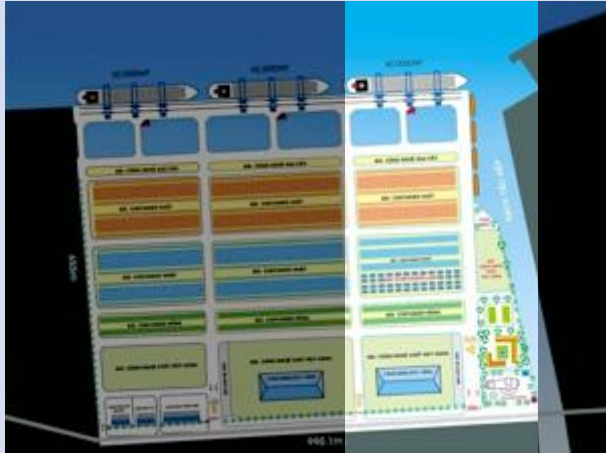
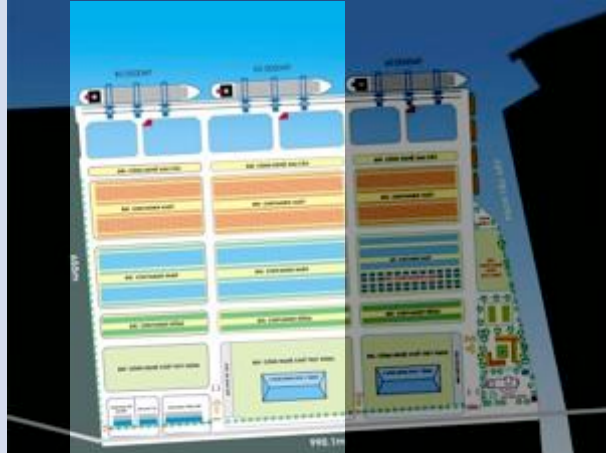




## CONTAINER TERMINAL PROJECT AT CAI MEP AREA

Loc	Name	Draft	Operation time
N	SITV	12 m	7/2010
I	SP-PSA	12 m	6/2009
G	TCCT	14 m	6/2009
G	TCIT	14 m	01/2011
E	CMIT	14 m	04/2011
D	ODA-CAIMEP	14 m	postponed
C	SSIT	14 m	03/2012
B	Germalink	14 m	2015
A	Cai Mep Downstream	14 m	postponed

# TAN CANG – CAI MEP TERMINALS

	PHASE 1	PHASE 2
		
Total area	200,000sqm	400,000sqm
Berth length	300m	590m
Equipment	03 Post-pana QMGCs; 10 RTGs 6+1, 15 trailers, 04 reach-stakers	06 Post-pana QMGCs; 20 RTGs 6+1, 30 trailers, 01 reach-staker
Vessel capacity	110,000-DWT (or 10,000-TEU)	110,000-DWT (or 10,000-TEU)
Annual capacity	600,000 TEUs	1,200,00 TEUs
Operation model	Managed by TCCT Joint Stock Company	Managed by the JV Company (TCIT)
Construction time	January 2006	Late 2008
Operation time	June 03, 2009	January 15, 2011



# TAN CANG – CAI MEP TERMINALS



## TCIT & TCCT OVERVIEW



TCIT JVA SIGNING CEREMONY



TCIT Grand Opening 15 Jan, 2011

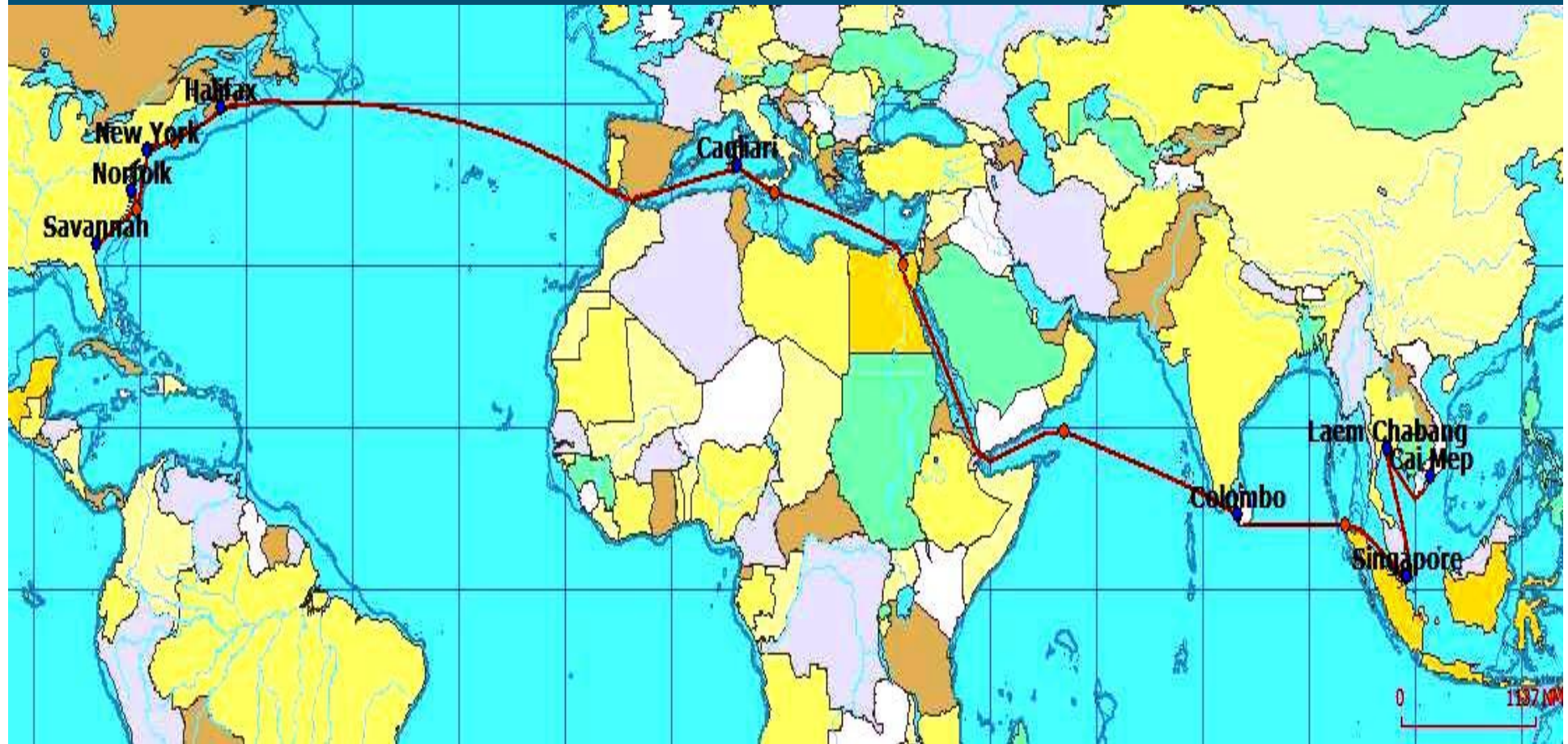
# CAI MEP – US WEST COAST SERVICE



T/S time : 15-16 days



# CAI MEP – US EAST COAST SERVICE



T/S time : 30 days

# CAI MEP – EUROPE SERVICE



T/S time : 19 ~ 24 days



# MAP OF SOUTHERN FOCAL ECONOMIC AREA

BINH DUONG PROVINCE

DONG NAI PROVINCE

HO CHI MINH CITY

LONG AN PROVINCE

BA RIA – VUNG TAU

Tan Cang – Cai Mep ICD



# TAN CANG – CAI MEP ICD

## Location

- ✓ Tan Phuoc Commune, Tan Thanh District, Ba Ria - Vung Tau Province
- ✓ 2 km away from Tan Cang - Cai Mep Terminals

## Scale & capacity

- ✓ Total area: 50 ha
- ✓ CY, warehouses, stuffing/unstuffing areas
- ✓ Total investment amount: VND 263 bil 749 mil equivalent to USD 12,559,000



# MAP OF SOUTHERN FOCAL ECONOMIC AREA

BINH DUONG PROVINCE

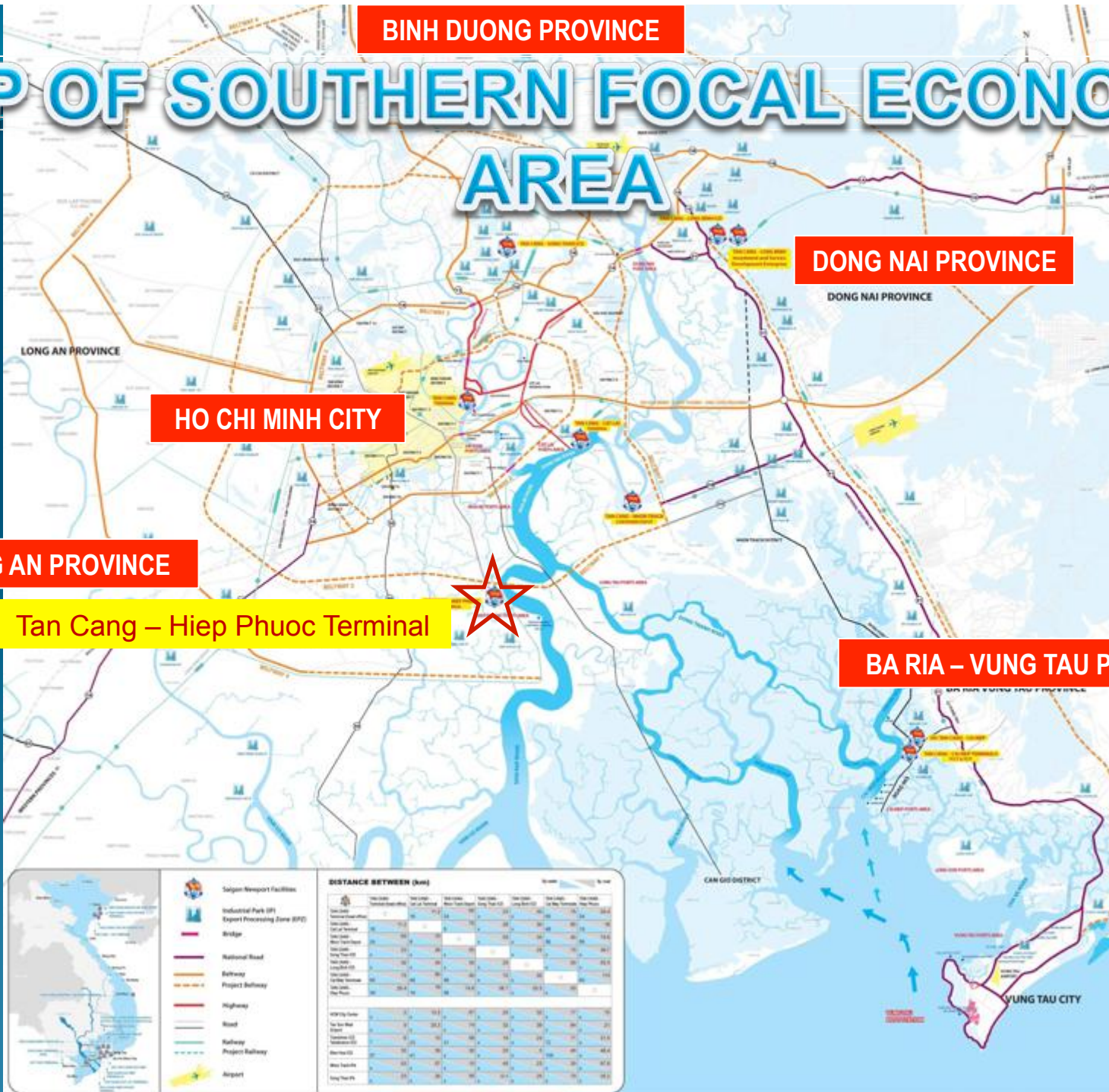
DONG NAI PROVINCE

HO CHI MINH CITY

LONG AN PROVINCE

Tan Cang – Hiep Phuoc Terminal

BA RIA – VUNG TAU PROVINCE



# TAN CANG – HIEP PHUOC TERMINAL

## Location:

Hiep Phuoc IP, Nha Be District, HCMC (2km away from SPCT)

## Scale & capacity:

- \* 15.4 ha (at the intersection of Soai Rap River & Dong Dien River)
- \* Berth length: 444m (at Soai Rap River) & 346m (at Dong Dien River)
- \* Capacity: 30,000-DWT vessel (at Soai Rap River) & barge (at Dong Dien River)

## Launch time:

Early 2014





# SNP's logistics

	NAME OF FACILITY	LOCATION
Barge terminals	Tan Cang Terminal Tan Cang – Cat Lai Terminal Tan Cang – Nhon Trach Depot Tan Cang – Cai Mep Terminals Tan Cang – Cao Lanh Terminal Tan Cang – Sa Dec Terminal Tan Cang – My Thoi Terminal	HCMC HCMC Dong Nai Province BR-VT rovince Dong Thap Province Dong Thap Province An Giang Province
Feeder terminals	Tan Cang – Cat Lai Terminal Tan Cang – Mien Trung Terminal Tan Cang – 189 Hai Phong Terminal	HCMC Binh Dinh Province Hai Phong City
Deepwater terminals	Tan Cang – Cai Mep Terminals (TCCT & TCIT)	BR-VT Province
ICDs	Tan Cang – Song Than ICD Tan Cang – Long Binh ICD Tan Cang – 128 Hai Phong ICD	Binh Duong Province Dong Nai Province Hai Phong City



# TAN CANG – CENTRAL VIETNAM TERMINAL

## Location

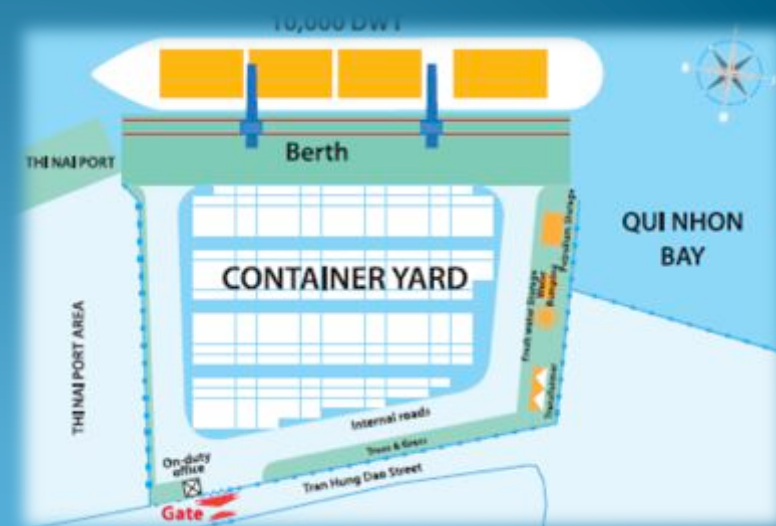
- ✓ Quy Nhon City, Binh Dinh Province

## Scale & capacity

- ✓ Total area: 110,000sqm
- ✓ Berth length: 147m (01 berth),
- ✓ Water depth:-10m
- ✓ Vessel capacity: 15,000-DWT
- ✓ Throughput capacity: 400,000 MTs
- ✓ Launch time: Feb. 2011

## Business activities:

- ✓ Stevedoring
- ✓ CY & warehousing services
- ✓ Waterway transport
- ✓ Tugboat service
- ✓ Agent for inland haulage & waterway transport
- ✓ Supply of materials & equipment; shipchandler
- ✓ Welfare services (training center, office for lease, restaurant, event organizing, public health service,...)





# TAN CANG - MIEN TRUNG TERMINAL



Opened 8 Feb, 2011



First container handled

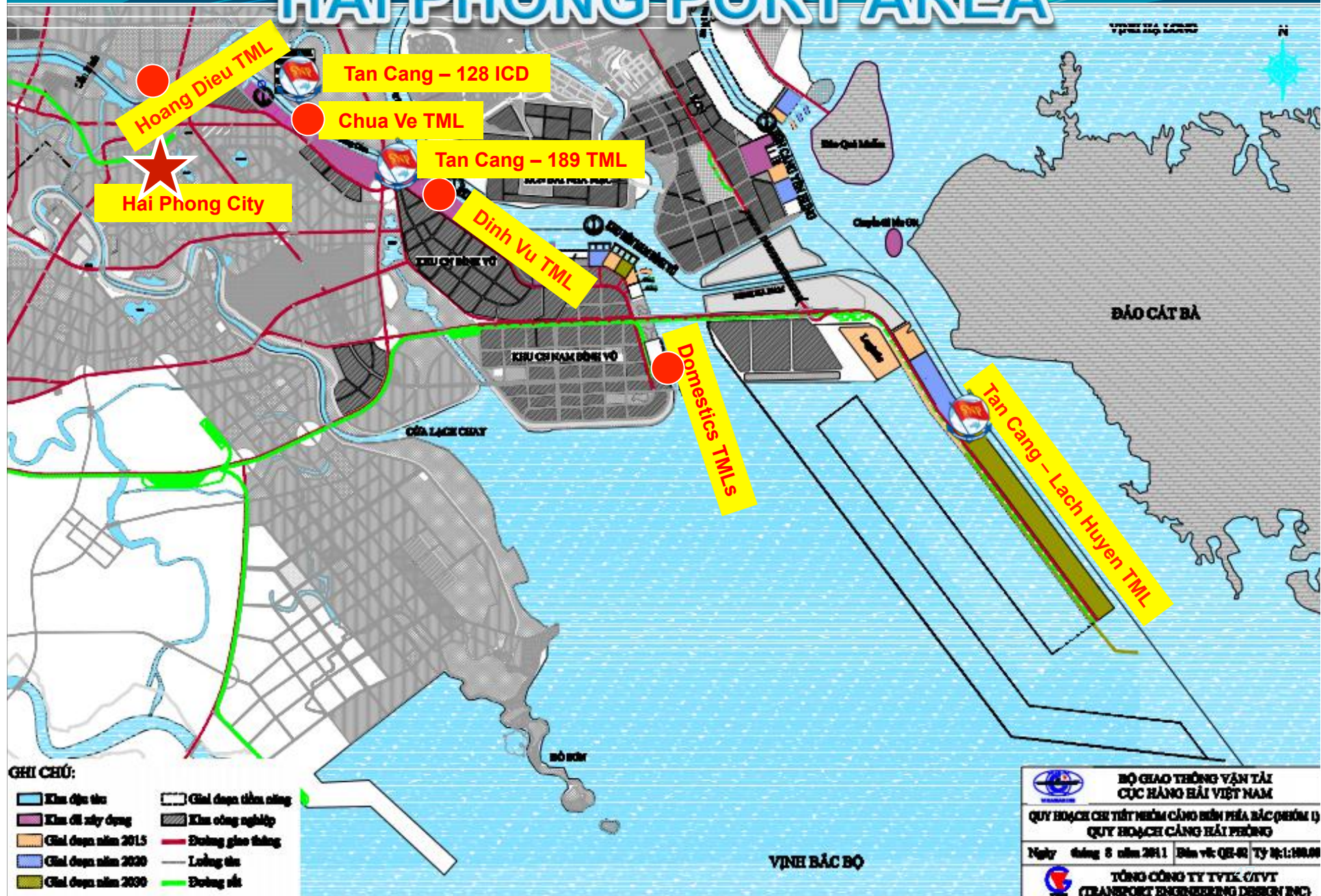
# SNP's logistics

	NAME OF FACILITY	LOCATION
Barge terminals	Tan Cang Terminal	HCMC
	Tan Cang – Cat Lai Terminal	HCMC
	Tan Cang – Nhon Trach Depot	Dong Nai Province
	Tan Cang – Cai Mep Terminals	BR-VT rovince
	Tan Cang – Cao Lanh Terminal	Dong Thap Province
	Tan Cang – Sa Dec Terminal	Dong Thap Province
	Tan Cang – My Thoi Terminal	An Giang Province
Feeder terminals	Tan Cang – Cat Lai Terminal	HCMC
	Tan Cang – Mien Trung Terminal	Binh Dinh Province
	Tan Cang – 189 Hai Phong Terminal	Hai Phong City
Deepwater terminals	Tan Cang – Cai Mep Terminals (TCCT & TCIT)	BR-VT Province
ICDs	Tan Cang – Song Than ICD	Binh Duong Province
	Tan Cang – Long Binh ICD	Dong Nai Province
	Tan Cang – 128 Hai Phong ICD	Hai Phong City





# HAI PHONG PORT AREA



- GHI CHÚ:**
- Khu dân cư
  - Khu đã xây dựng
  - Khu dự kiến năm 2015
  - Khu dự kiến năm 2020
  - Khu dự kiến năm 2030
  - Khu dự kiến tầm nhìn
  - Khu công nghiệp
  - Đường giao thông
  - Đường tàu
  - Đường sắt


**BỘ GIAO THÔNG VẬN TẢI**  
**CỤC HÀNG HẢI VIỆT NAM**  
 QUY HOẠCH CHI TIẾT NHÌM CÔNG HẠN PHÍA BẮC (NHÓM 1)  
**QUY HOẠCH CẢNG HẢI PHÒNG**  
 Ngày tháng 8 năm 2011 | Bản vẽ: QH-01 | Tỷ lệ: 1:100.000  

**TỔNG CÔNG TY TVTK-CTVT**  
**(TRANSPORT ENGINEERING DESIGN INC)**

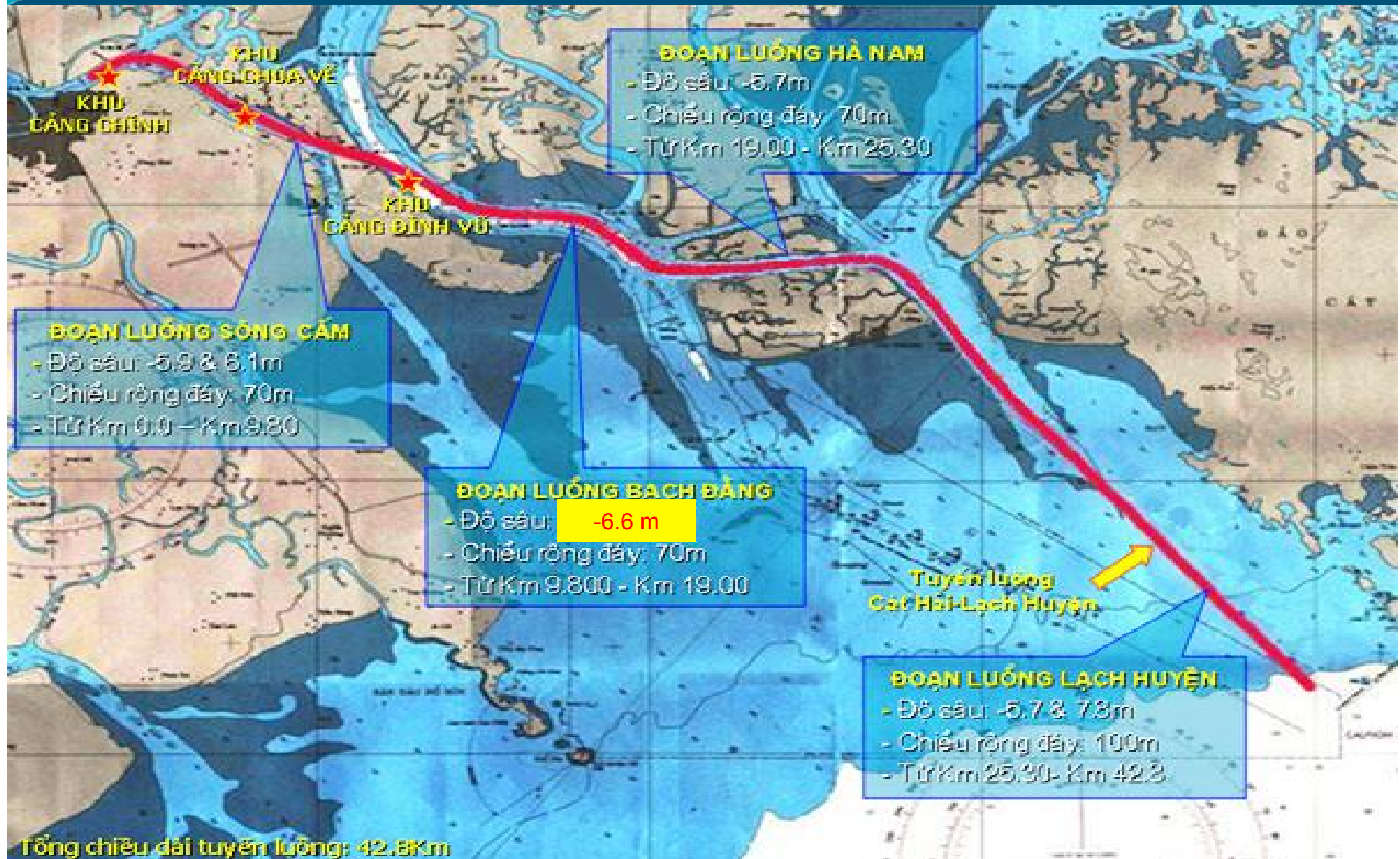


# MAP OF NORTH-EAST AREA





# HAI PHONG PORT CHANNEL



# TAN CANG – 128 HAI PHONG ICD

## Location

- ✓ Hai Phong City, nearby the Northern focal economic areas including Hanoi, Quang Ninh, Hung Yen, Vinh Phuc, Bac Ninh.

## Scale & capacity

- ✓ Total area: 146,100sqm; CY area: 60,835sqm; WHS area: 764sqm
- ✓ Berth length: 230m; vessel capacity: 10,000-DWT

## Business activities:

- ✓ ICD services
- ✓ Storage and lift on/off services
- ✓ Repair, cleaning and other container-related services
- ✓ Warehousing and logistics activities





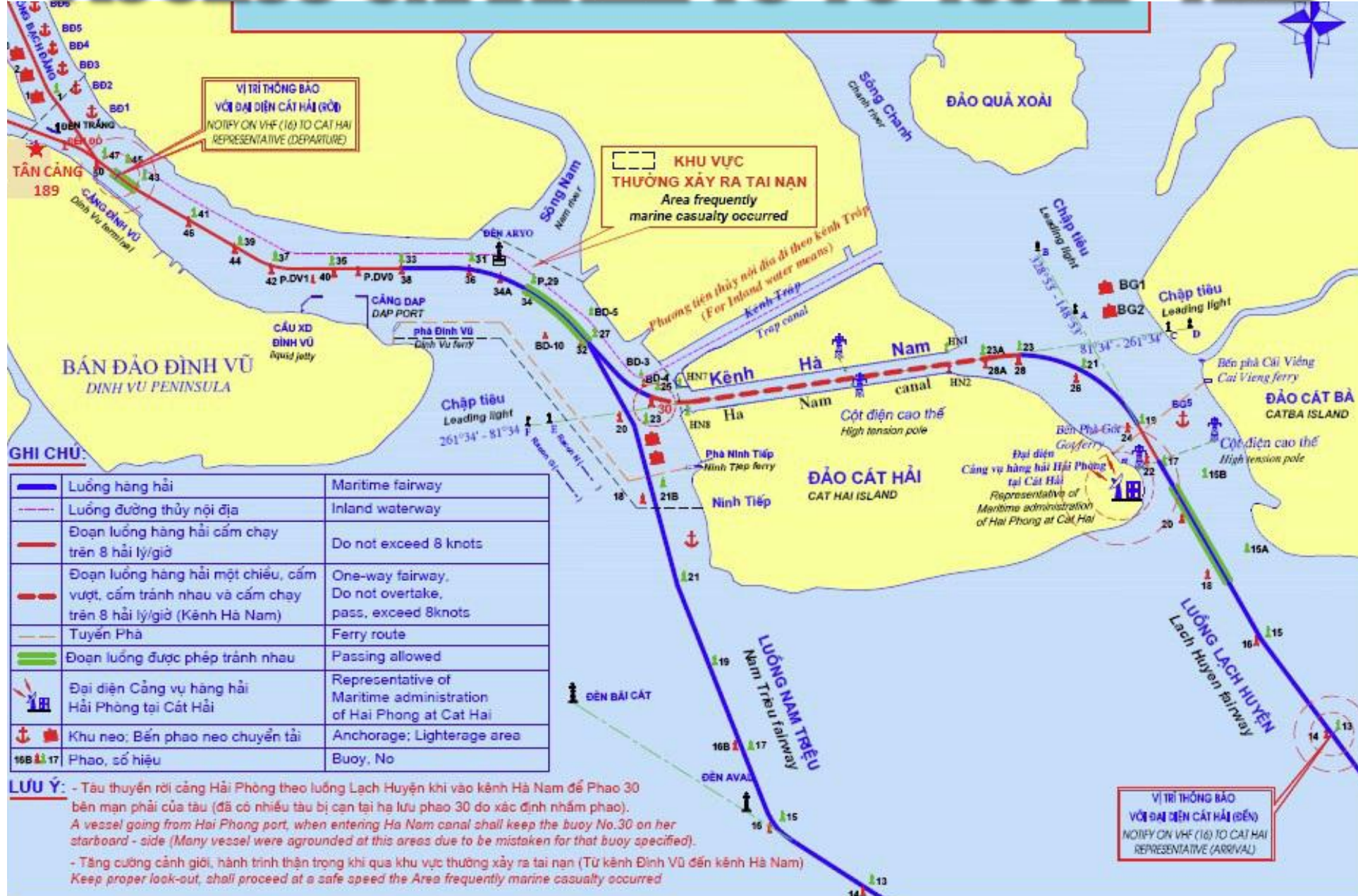


# MAP OF NORTH-EAST AREA





# ACCESS CHANNEL TO TC-189 HP TML



VỊ TRÍ THÔNG BÁO  
VỚI ĐẠI DIỆN CÁT HẢI (RỜI)  
NOTIFY ON VHF (16) TO CAT HAI  
REPRESENTATIVE (DEPARTURE)

KHU VỰC  
THƯỜNG XẢY RA TAI NẠN  
Area frequently  
marine casualty occurred

VỊ TRÍ THÔNG BÁO  
VỚI ĐẠI DIỆN CÁT HẢI (ĐẾN)  
NOTIFY ON VHF (16) TO CAT HAI  
REPRESENTATIVE (ARRIVAL)

**GHI CHÚ:**

	Luồng hàng hải	Maritime fairway
	Luồng đường thủy nội địa	Inland waterway
	Đoạn luồng hàng hải cấm chạy trên 8 hải lý/giờ	Do not exceed 8 knots
	Đoạn luồng hàng hải một chiều, cấm vượt, cấm tránh nhau và cấm chạy trên 8 hải lý/giờ (Kênh Hà Nam)	One-way fairway, Do not overtake, pass, exceed 8 knots
	Tuyến Phà	Ferry route
	Đoạn luồng được phép tránh nhau	Passing allowed
	Đại diện Cảng vụ hàng hải Hải Phòng tại Cát Hải	Representative of Maritime administration of Hai Phong at Cat Hai
	Khu neo; Bến phao neo chuyển tải	Anchorage; Lighterage area
	Phao, số hiệu	Buoy, No

**LƯU Ý:** - Tàu thuyền rời cảng Hải Phòng theo luồng Lạch Huyện khi vào kênh Hà Nam để Phao 30 bên mạn phải của tàu (đã có nhiều tàu bị cạn tại hạ lưu phao 30 do xác định nhầm phao).  
A vessel going from Hai Phong port, when entering Ha Nam canal shall keep the buoy No.30 on her starboard - side (Many vessel were agrounded at this areas due to be mistaken for that buoy specified).  
- Tăng cường cảnh giới, hành trình thận trọng khi qua khu vực thường xảy ra tai nạn (Từ kênh Đình Vũ đến kênh Hà Nam)  
Keep proper look-out, shall proceed at a safe speed the Area frequently marine casualty occurred







# MAP OF NORTH-EAST AREA



Cai Lan port

Thi Xa Cam Pha  
Cam Pha Town

Hai Phong City

Tan Cang-128 Hai Phong ICD

Tan Cang-189 Terminal

Tan Cang - Lach Huyen Terminal

Bach Long Vy

Huyen Bach Long Vy



# TAN CANG – LACH HUYEN TERMINAL





# TAN CANG – LACH HUYEN TERMINAL

## Location

- ✓ Hai Phong City

## Scale & capacity

- ✓ Total area: 200.000sqm
- ✓ Berth length: 2.100m; 9 Berths

## Business activities:

- ✓ Terminal operations and logistics activities
- ✓ Free trade center



# SNP's logistics

	NAME OF FACILITY	LOCATION
Barge terminals	Tan Cang Terminal	HCMC
	Tan Cang – Cat Lai Terminal	HCMC
	Tan Cang – Nhon Trach Depot	Dong Nai Province
	Tan Cang – Cai Mep Terminals	BR-VT rovince
	Tan Cang – Cao Lanh Terminal	Dong Thap Province
	Tan Cang – Sa Dec Terminal Tan Cang – My Thoi Terminal	Dong Thap Province An Giang Province
Feeder terminals	Tan Cang – Cat Lai Terminal	HCMC
	Tan Cang – Mien Trung Terminal	Binh Dinh Province
	Tan Cang – 189 Hai Phong Terminal	Hai Phong City
Deepwater terminals	Tan Cang – Cai Mep Terminals (TCCT & TCIT)	BR-VT Province
ICDs	Tan Cang – Song Than ICD Tan Cang – Long Binh ICD Tan Cang – 128 Hai Phong ICD	Binh Duong Province Dong Nai Province Hai Phong City









Phnom Penh Port  
CAMBODIA

# FEEDER BARGING SERVICES

## Tancang No.2 & Newport-Cypress

Tancang - Cao Lanh TML

Cat Lai Terminal, HCM

Tancang - Sa Dec TML

Tan Cang-Cai Mep,  
TCCT & TCIT

My Thoi Port, An Giang

Can Tho Port



# VIETNAM – CAMBODIA BARGING

INT' L BARGING BY NEWPORT-CYPRUSS

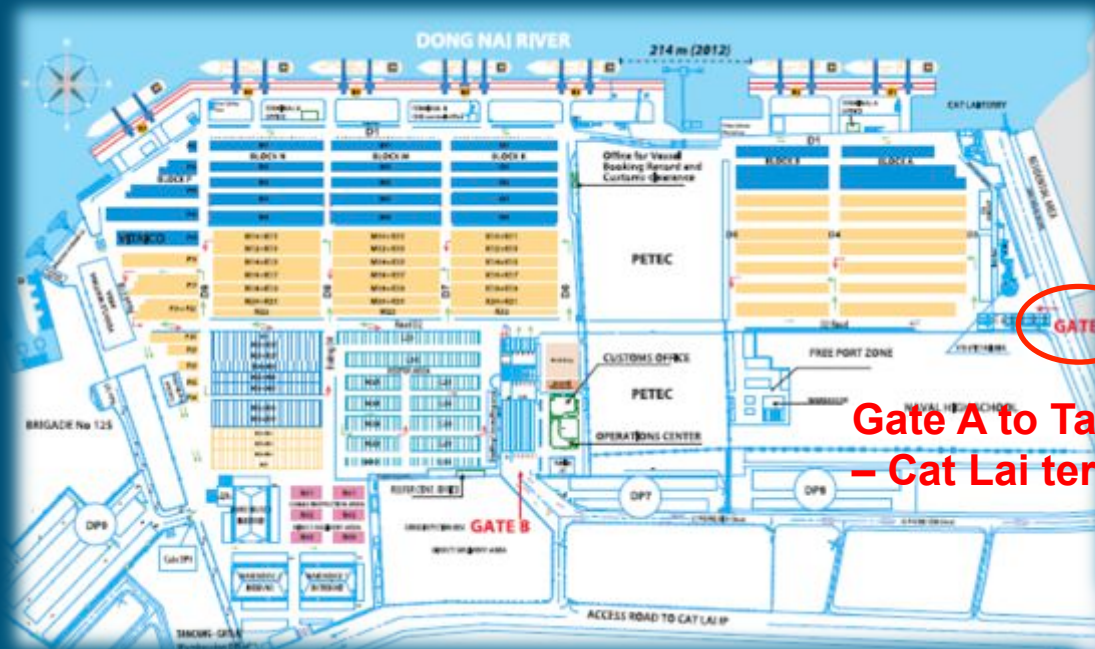


BARGING SERVICE



DOMESTIC BARGING BY TAN CANG No.2 61

# TAN CANG – STC TRAINING CENTER



## Partners:



Gate A to Tan Cang  
– Cat Lai terminal

## Training courses:

- ✓ Port and logistics
- ✓ Shipping & shipping agents

Opening in March 21, 2012





# TAN CANG – STC TRAINING CENTER



**Visit of the Crown Prince of the Netherlands to SNP in May 2011**

**...accompanied by representatives of 80 Dutch enterprises**



# TAN CANG – STC TRAINING CENTER

Port Logistics Simulator ® (PLS)

03/02/2012





# TAN CANG – STC TRAINING CENTER

## Transport Chain Simulator ® (TCS)

16 stations, 32 positions, 1 or 2 students per station

31/01/2012

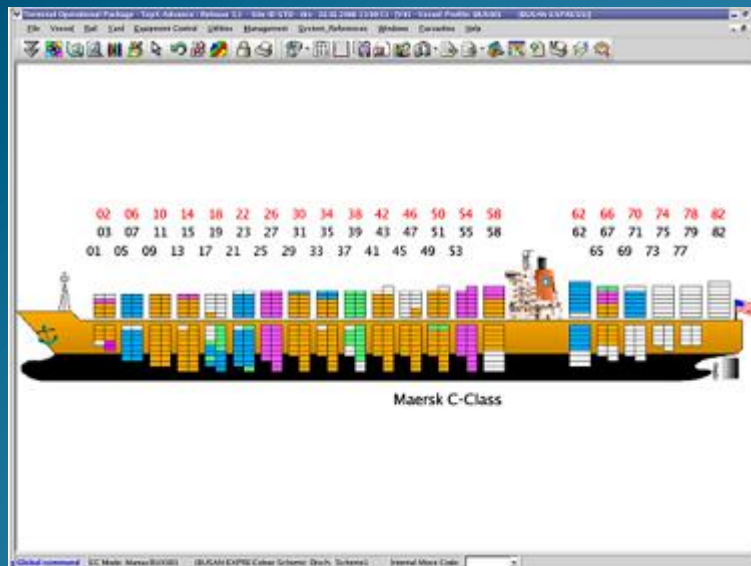


# SOFTWARE USED FOR TERMINALS

**TOPX** (Terminal Operation Package System) provided by Real time Business Solution - RBS / Australia

Functions:

- ✓ Shipline and CY auto planning
- ✓ Container handling equipments assignment
- ✓ Real time container location report
- ✓ Wireless devices/hand-held/DGPS





# DEVELOPMENT OF TOPX

- ✓ Integrated to e-Customs
- ✓ Declaration via internet
- ✓ E - Manifest
- ✓ PORT – shipping lines is linked by EDI
- ✓ Linked with X-ray container scanner for customs inspection
- ✓ E - Banking
- ✓ E-Port :

<http://co-pt.saigonnewport.com.vn>



# CUSTOMER SERVICE CENTER



TRUNG TÂM THÔNG TIN & HỖ TRỢ KHÁCH HÀNG  
CUSTOMER SERVICES CENTER

ĐIỆN THOẠI NÓNG (hot line) : 0907.400.400

**THÔNG BÁO**  
TRUNG TÂM THÔNG TIN & HỖ TRỢ KHÁCH HÀNG  
Phục Vụ Các Dịch Vụ Sau :

- Cung cấp mọi thông tin về thủ tục theo yêu cầu của khách hàng, bao gồm:
  - Chính sách, gói dịch vụ.
  - Quy trình giao, nhận hàng hóa.
  - Kiểm tra và xử lý khiếu nại.
  - Chỉ dẫn vị trí các văn phòng, địa điểm trưng bày.
  - Giải đáp các thắc mắc khác.
- Trực tiếp nhận, giải đáp, giải quyết mọi ý kiến phản ánh của khách hàng liên quan đến chất lượng dịch vụ cũng tại văn phòng trưng bày với lịch làm việc thường xuyên sau đây: Thời gian làm việc của trung tâm từ 08h đến 17h hàng ngày (trừ chủ nhật, ngày lễ).
- Tiếp nhận và giải quyết các thắc mắc, khiếu nại của khách hàng. **Lưu ý:** Mọi thắc mắc xin liên hệ số điện thoại 0907.400.400, kể cả ngoài giờ làm việc.

GRATULATION  
TÂN BÌNH SÀI GÒN

Chúc mừng Lễ Khai Trương Văn Phòng Mới Của LHM  
TÂN BÌNH SÀI GÒN



Customers care service 24/7



# VIETNAM VALUE 2010 AWARD



# THANK YOU!!!

